

No.	Date	Revision	By

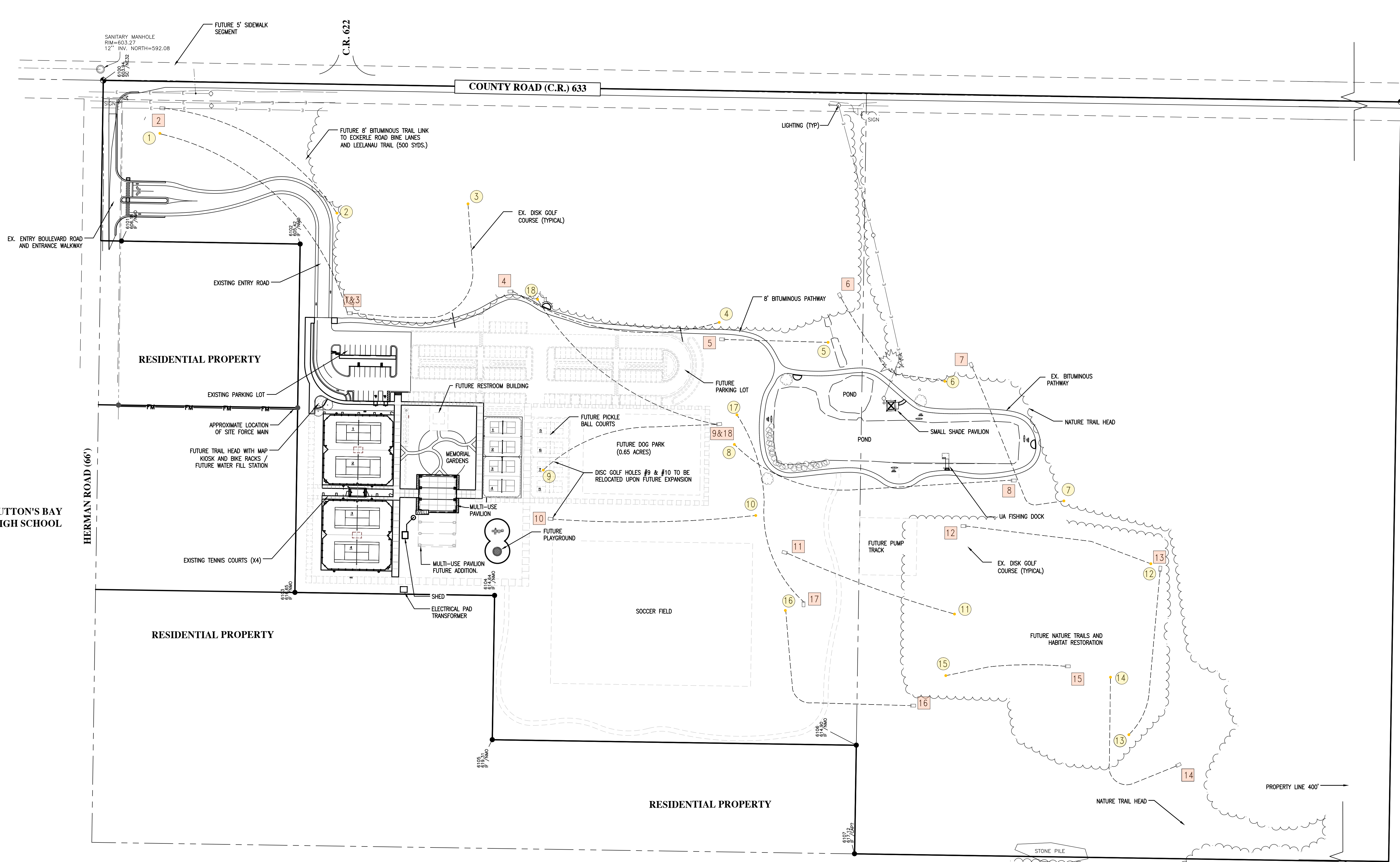
**TENTATIVE SITE DEVELOPMENT PLAN
 HERMAN PARK
 SUTTONS BAY TOWNSHIP**

Date Issued: 07-01-2021
 Date Surveyed: ###
 Designed By: DAW
 Drawn By: DAW
 Checked By: KSK
 Scale: 1" = 80'
 Original sheet size is 24x36

Location: T30N R11W
 SECTION 32
 SUTTONS BAY TOWNSHIP
 LEELENAU COUNTY
 MICHIGAN

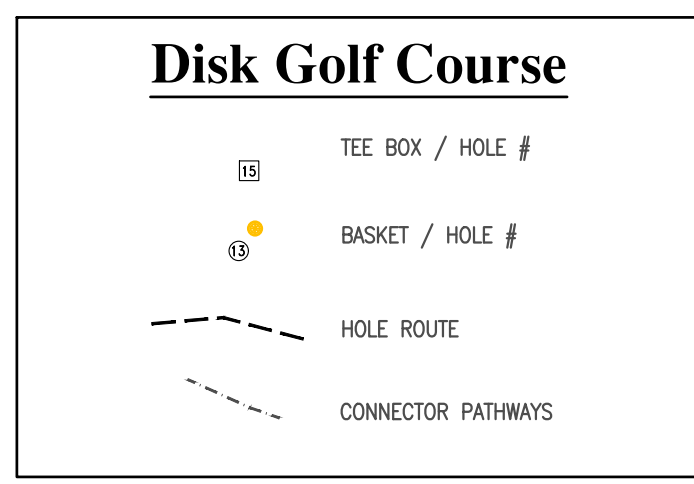
Project Number:
 2019022001.00

Sheet:
S1



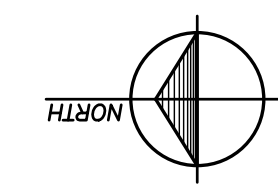
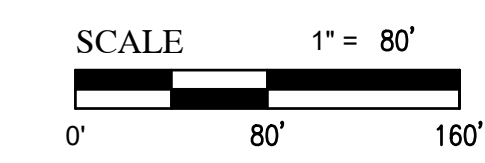
**HERMAN PARK
 TENTATIVE SITE AND DEVELOPMENT PLAN
 (Pending Review and Approvals)**

SCALE: 1" = 80'



General Legend

- EX EDGE OF GRAVEL
- EX EDGE OF CONCRETE
- EX OVERHEAD ELECTRIC
- EX CONCRETE CURB
- EX SIGN
- EX CONIFEROUS TREE
- EX DECIDUOUS TREE
- EX VEGETATION / TREELINE



**Know what's below.
 Call before you dig.**

THE LOCATION OF THE EXISTING UTILITIES, AS SHOWN ON THIS PLAN, ARE APPROXIMATE ONLY. IT SHALL BE THE RESPONSIBILITY OF THE CONTRACTOR TO VERIFY ACTUAL LOCATION AND DEPTH OF ALL EXISTING UTILITIES. THE OWNER AND THE SURVEYOR SHALL NOT BE RESPONSIBLE FOR ANY OMISSION OR VARIATION FROM THE LOCATION SHOWN. THE CONTRACTOR SHALL NOTIFY "MISS DIG" AT 1 (800) 482-7171 OR 811 THREE (3) WORKING DAYS PRIOR TO THE START OF CONSTRUCTION.